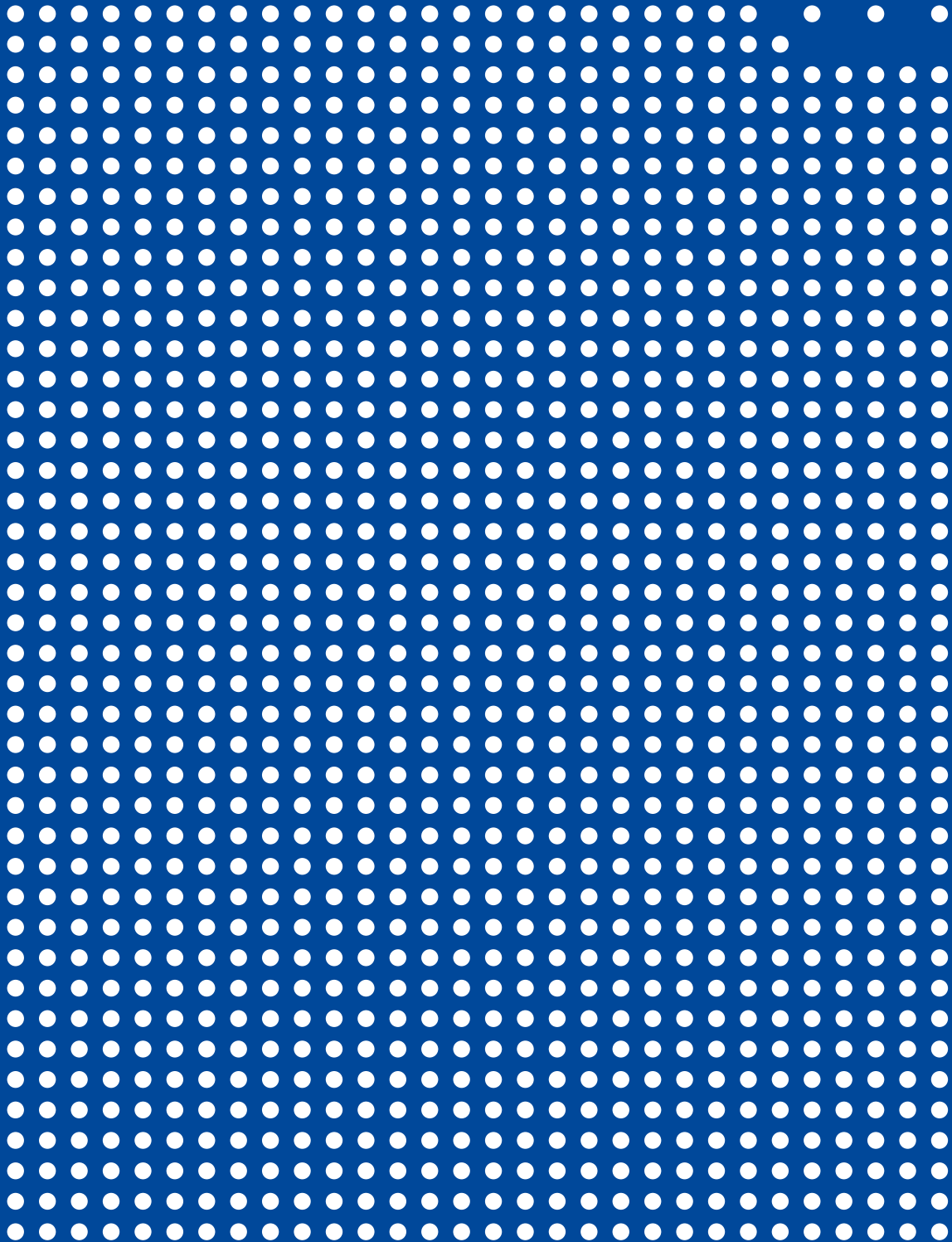




EPS MACHINERY
CATALOGUE





5 AXES CONTOUR CUTTERS

THE MOST VERSATILE SOLUTION FOR THE PRODUCTION, IN SMALL SETS, OF PROFILES WITH UNIFORM AND VARIABLE-SECTION, OBTAINED BY HOT WIRE CUTTING OF PS / XPS BLOCKS.

MODELS

- **SERIES "A":** contour cutters equipped with automatic wire setting system
 - Reduced set-up for just-in-time productions
 - Outstanding product quality and process repeatability

ADVANTAGES

MANUFACTURING OF EXCELLENCE

- In-house start-up and test
- Prevention of fire ignition: hot wires automatically switch off when working axes remain inactive for longer than a set time-limit
- Solid and compact structure, built to guarantee maximum resistance, stability and safety for operators
- Designed to facilitate access to all components

SUPERVISION AND CONTROL

- Supervision system with graphic preview of profiles to be processed
- Real time control of work in progress
- Indicators positioned on the graphic layout of the machine for a rapid resolution of failures/stops
- Broken wire detection system with automatic stop of the machine
- Updated machine library containing all relevant diagnostic messages and previous working cycles

CONNECTIVITY

- Possibility of connection to local network and interface with enterprise management system
- Download and export of process data in the main commercial formats
- Remote control and monitoring
- Remote assistance software

DRAWING PROGRAM

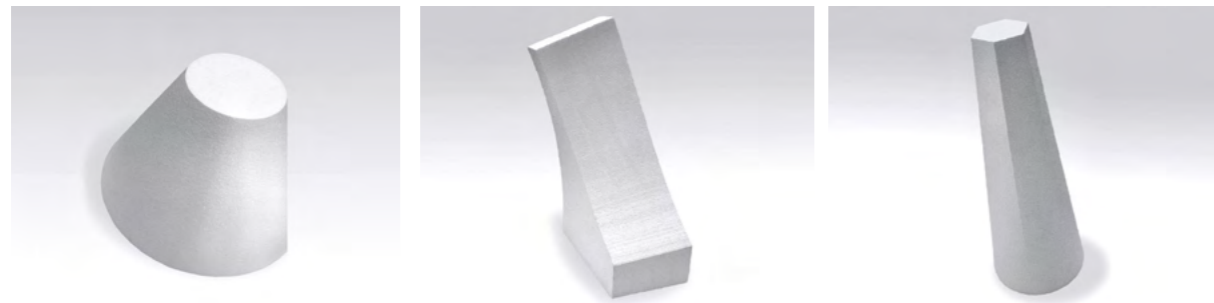
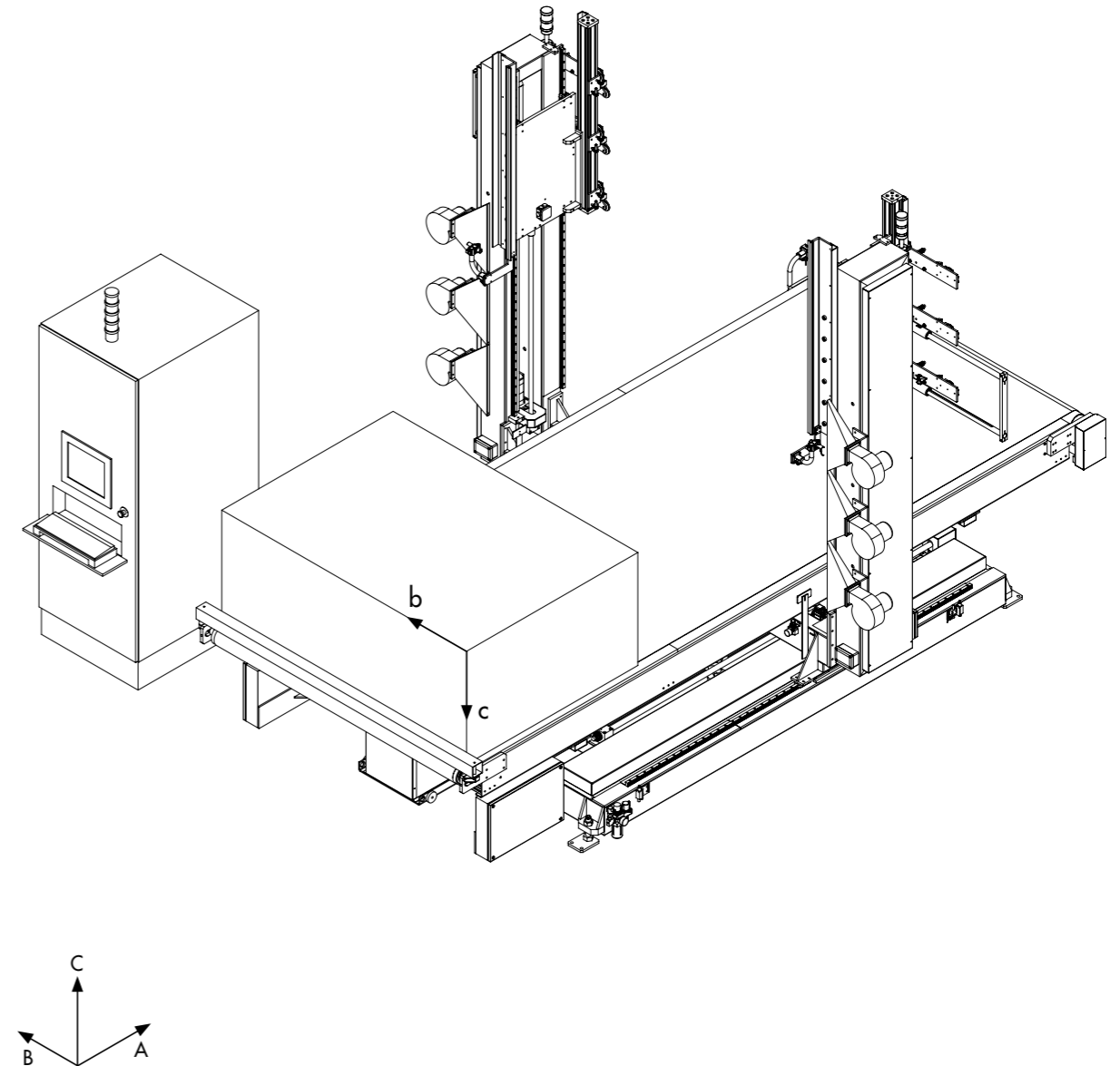
- TD PROJECT: the drawing program allows users to define and modify the path of cutting wires. It provides a wide range of possibilities for managing any drawing element and set different working parameters such as speed and pause at every point of the profile. It supports DXF files import and BIPMAP vectorization

OUTSTANDING PERFORMANCE

- **The most versatile solution for complex shapes manufacturing** thanks to the independent movement of all working axes
- **Optimized cutting performance:** availability of pre-installed process parameters fine-tuned based on different block features
- **Fast cutting process without interruptions** thanks to the unique cooling system designed to maximize working speed and avoid wire breaking
- **Production accuracy and repeatability:** precision mechanics and the use of ultimate components available guarantee fluid and effective synchronism and movements over time
- **Quick changeover** for just-in-time manufacturing, with the addition of automatic wire setting system
- **Reduced cycle time and energy consumption:** optimized auto-adjustment of belt speed and cutting wires temperature

FLEXIBILITY

- Wide range of configurations of process parameters such as cutting speed, wires temperature and on/off time
- Setting of initial point of work
- Fully automatic working cycle with possibility of real time variation of parameters
- Possibility of manual control of movements
- Possibility to process only a part of the profile
- Auto-recovery of latest working point in case of power interruption (eg. Black-out)



Model	Overall dimensions (mm)			Cutting dimensions (mm)		Frame wires (No.)	
	A	B	C max	b	c	Mobile	Telescopic
CC250	5.200	3.800	3.600	1.500	1.400	50	3
CC260	5.200	4.400	3.600	2.100	1.400	50	3
CC270	5.200	6.200	3.600	4.000	1.400	30	3
CC260A	5.800	4.400	3.800	2.100	1.400	50	3

Overall dimensions do not include perimeter protection systems

TECNODINAMICA SRL

V.LE EUROPA, 37/38
Z.I. SOLIGO
31010 FARRA DI SOLIGO
TREVISO - ITALY
T +39 0438 98 04 84
info@tecnodinamica.it

www.tecnodinamica.it

